



MONTHLY MEMBERSHIP PROGRESS REPORT

District 410 D

Results as of: 12/31/2017

GMT: RASHMI KOOVERJEE

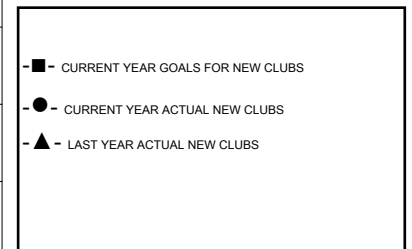
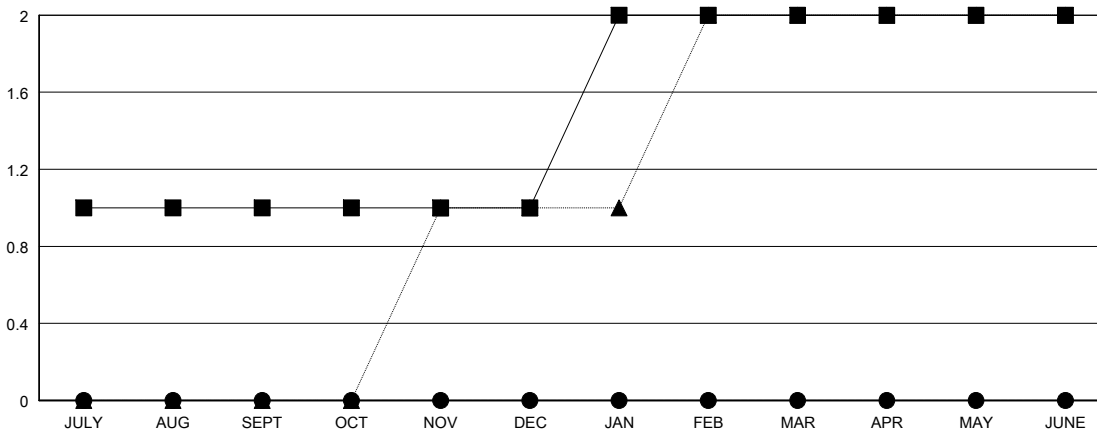
LOCATION REP OF SOUTH AFRICA

GMT CA

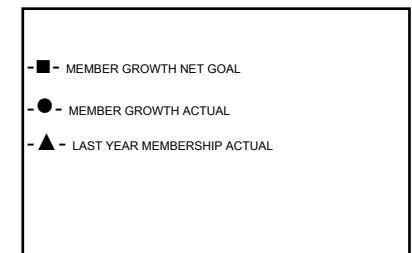
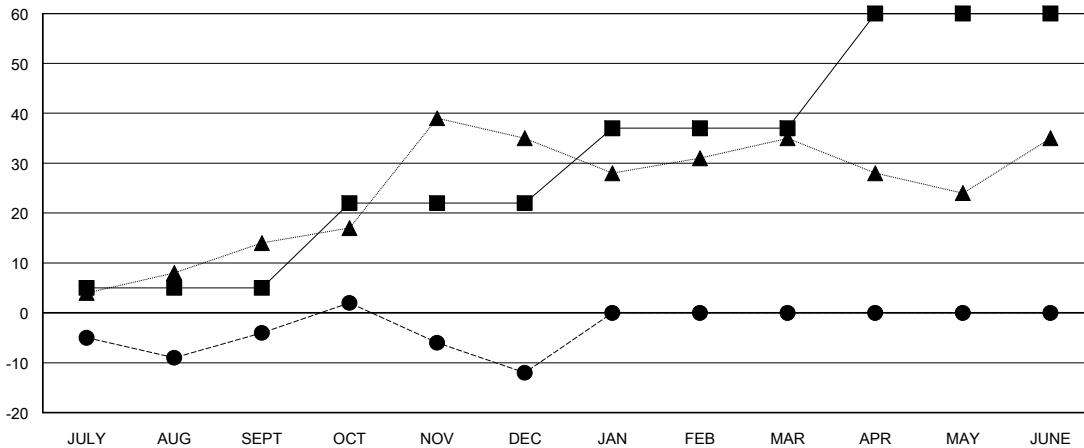
Clubs			
RESULTS FOR 2017-2018			
QUARTER	NEW CLUB GOAL	NEW CLUBS	DROPPED CLUBS
JULY/AUG/SEPT	1	0	0
OCT/NOV/DEC	0	0	0
JAN/FEB/MAR	1	0	0
APR/MAY/JUNE	0	0	0

Members			
RESULTS FOR 2017-2018			
QUARTER	MEMBER GROWTH NET GOAL	MEMBER GROWTH ACTUAL	DROPPED MEMBERS ACTUAL (including transfers)
JULY/AUG/SEPT	5	12	15
OCT/NOV/DEC	17	14	22
JAN/FEB/MAR	15	0	0
APR/MAY/JUNE	23	0	0

GOALS AND ACTUAL NEW CLUBS CUMULATIVE



GOALS AND ACTUAL MEMBERS CUMULATIVE



DROPPED CLUBS: 0	8 CLUBS OF 31 ADDED 1 OR MORE NEW MEMBERS	<u>GENDER DISTRIBUTION</u> MALE 214 (59.44%) FEMALE 146 (40.56%) Women Percentage Fiscal Year Goal: 40%
<u>DROPPED MEMBERS</u> DECEASED 2 CLUB CANCELLED 0 OTHER 35 TOTAL 37	CLICK HERE FOR CUMULATIVE MEMBERSHIP DATA	TOTAL FAMILY UNIT MEMBERS 117 FAMILY MEMBERS PAYING HALF DUES 62